



Survey of construction material in Myanmar

Natsumi Hara, Master course student, Meguro laboratory of IIS in the University of Tokyo

For development of fragility curves for existing RC (reinforced concrete) buildings in Yangon, Dr. Gokon and I conducted questionnaire surveys in Yangon city, Myanmar on October 12th and 13th.

Oct 12th: We had a meeting with professors from Yangon Technological University (YTU). We confirmed the strategy for the improvement of fragility functions, and discussed how we cooperate. On the night, we had a meeting with JICA specialist working in Myanmar. He have provided many precious information with us about construction situation of Myanmar.

Oct.13th: In the morning, we visited a construction site of RC building in north region of Yangon city and conducted a questionnaire survey to a building designer (**Fig.1, 2**). We found that the designer was doing everything of management, from designing to structural calculation for supervising construction site. He also showed a new building with three stories that had been constructed by him (**Fig.3**). In the afternoon, we visited to Thaketa bridge construction site and interviewed to Japanese staffs (**Fig.4, 5**). In the interview, we learned the difficulties to obtain high quality materials to satisfy their standard, in current Yangon situation. From another construction site, we also reviewed concrete samples for compressive test (**Fig.6**). I will progress my research by using a lot of important information from these interview survey.



Fig.1

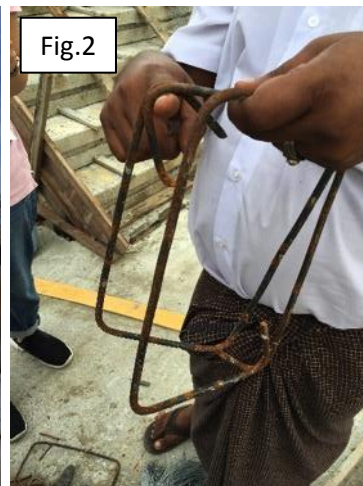


Fig.2



Fig.3



Fig.4



Fig.5



Fig.6